

MAY
2026





CHRISTMAS PRE-BOOKING

ENDING SOON

Less than a month remains before the Christmas pre-booking deadline. Place your order now online or contact your representative before it's too late.

WHY SHOULD YOU PLACE A PRE-ORDER?

To secure your product quantities. Once the pre-booking is closed, limited stock and selections will be available.

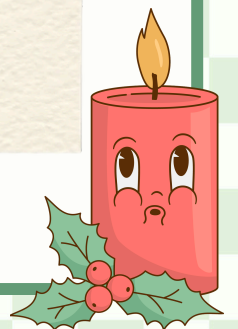
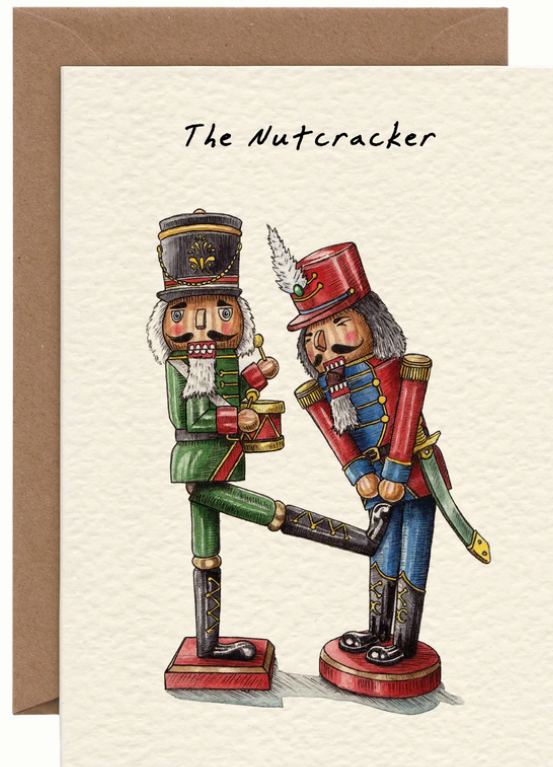
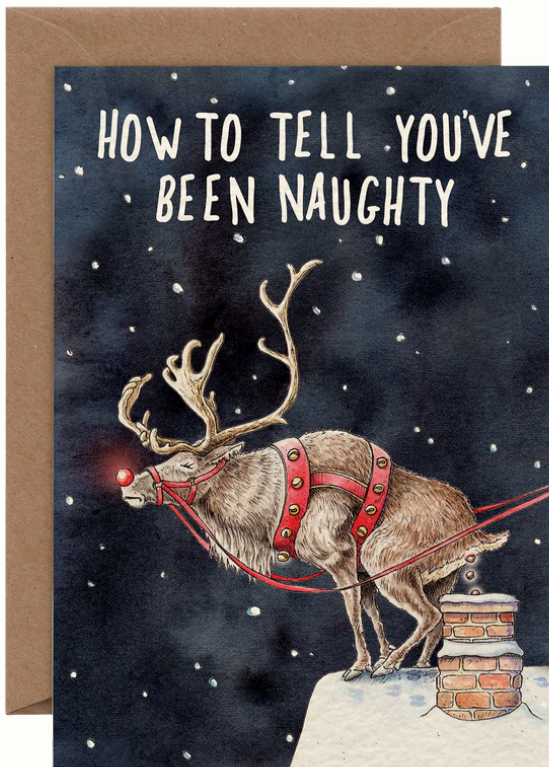
DEADLINE:
JUNE 14TH, 2026





BEWILDERBEEST

Add a touch of humour to your Christmas this year with our Bewilderbeest cards!

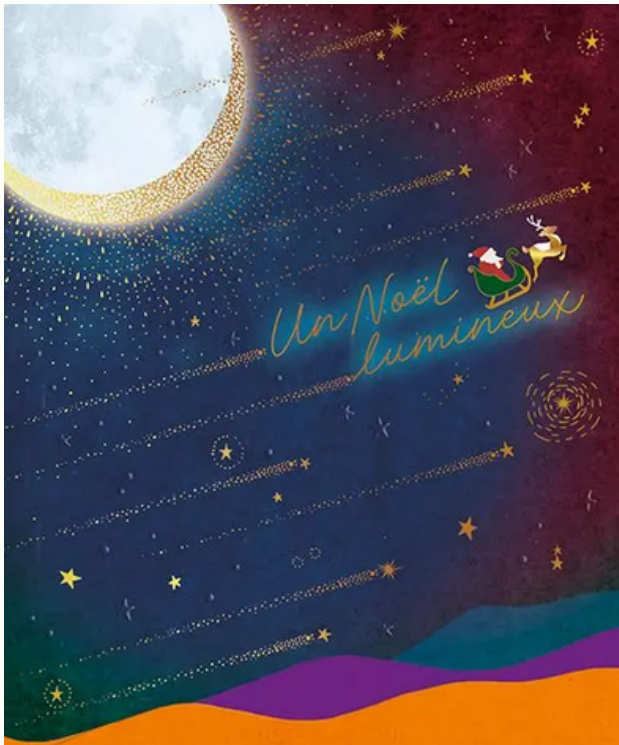




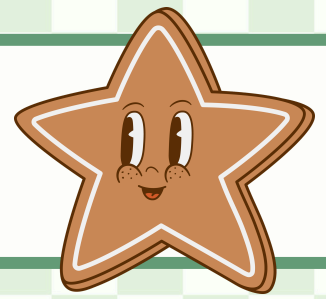
GROUPE ÉDITOR



*More than 650 selections of French and Blank cards
with various finishes such as foiling or embossing!*



BUG ART



*Where playful illustrations meet elevated finish,
embossed, delicate foil and quiet charm!*



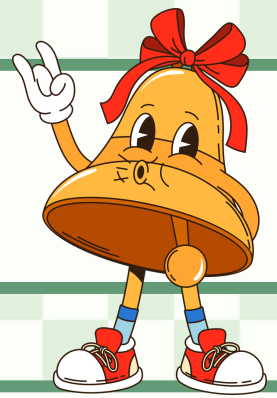


HEYYYY CARDS

Beautifully crafted die-cut cards with embossed details that bring every design to life. Textures and unique shapes make each card feel extra special.



ME&MCQ



Intricate 3D cards designed to impress from every angle and the best part, no assembly needed. Each one opens into a beautifully detailed display that feels like a little work of art.



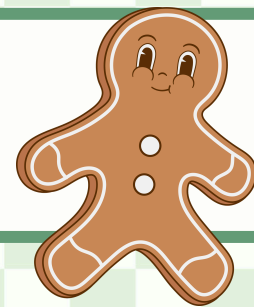


QUIRE PUBLISHING

With vintage-inspired designs and timeless holiday charm, each piece feels wonderfully classic. Roll wraps, advent calendar greeting cards, gift bags and much more!



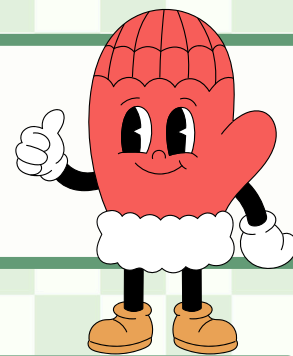
ROGER LA BORDE



Featuring 3D pop-up designs, these detailed scenes are made to build, display, and enjoy. These are just a few highlights from their wide range of unique products.



SECOND NATURE



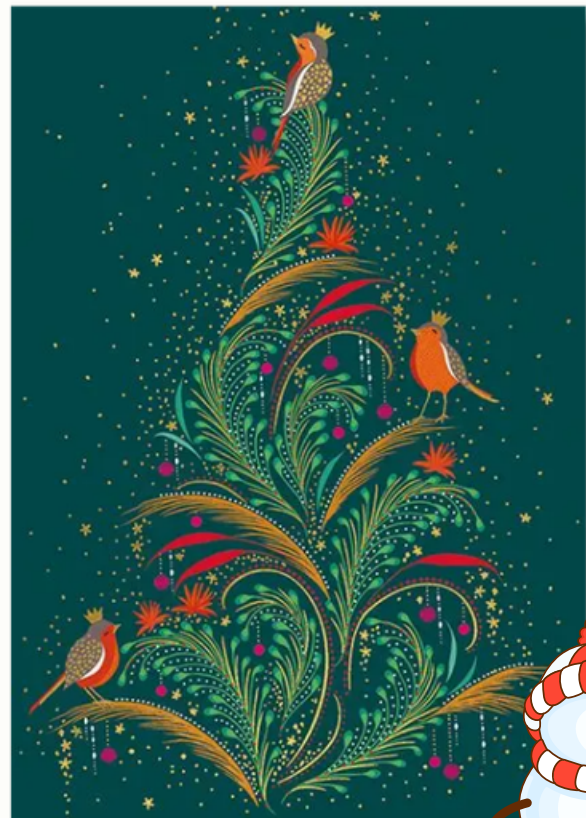
Discover their greeting cards, elegant boxed sets and meaningful relationship cards including the beloved Champagne Christmas collection!





THE ART FILE

Featuring the favourite Storybook and Bear collections, assorted gift bags, elegant gift wrap, and other holiday designs that bring warmth and tradition to the season.





Deadline

June 14th, 2026

www.incognitodistribution.ca

Toll free: 1 877-772-2233

Montreal area: 450 857-1800

